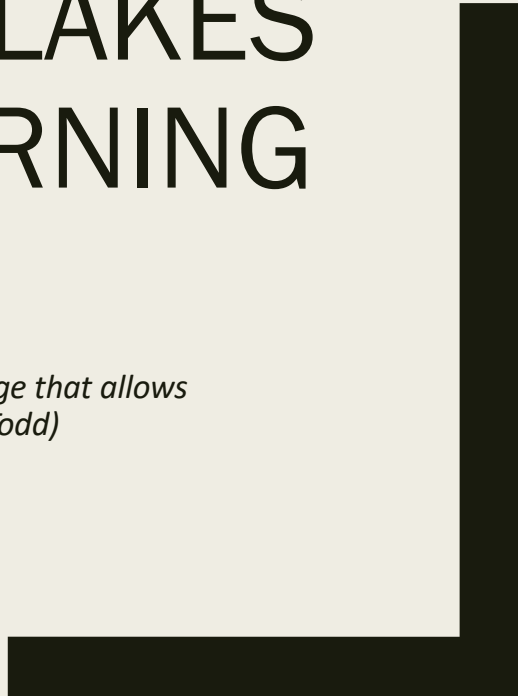




# GENESEE FINGER LAKES BIOREGIONAL LEARNING CENTER

*"Each person needs to be the bearer of the kind of knowledge that allows  
that person to be a steward of the planet." (John Todd)*

November 2023



## Donella Meadows, in conversation with Vernon Ruttan and John Todd

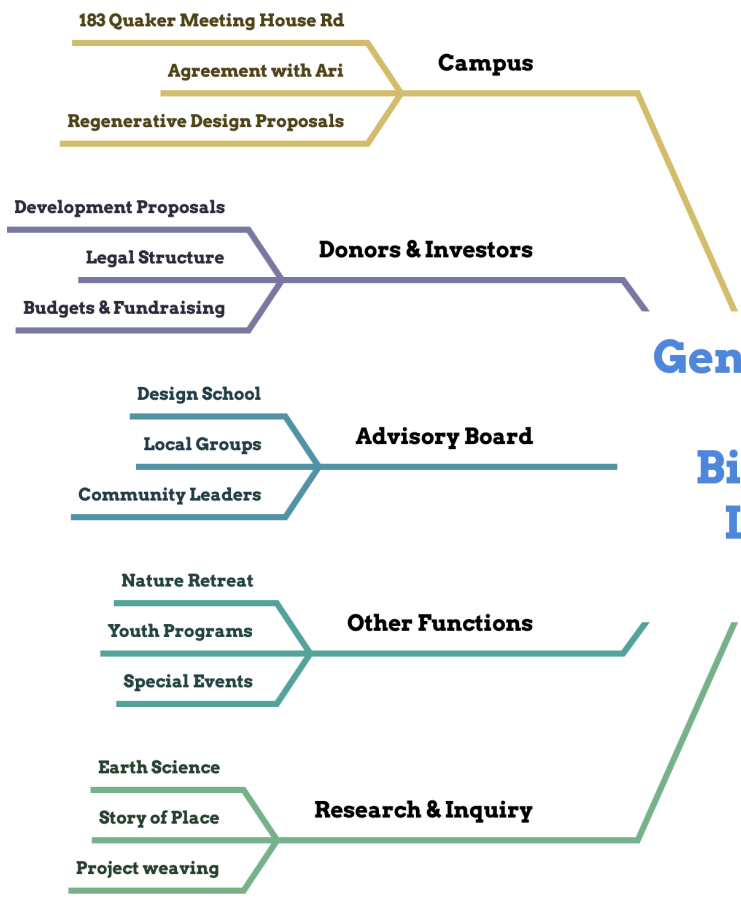
Out of that [conversation] came a vision of a number of centers where information and models about resources and the environment are housed. There would need to be many of these centers, all over the world, each one responsible for a discrete bioregion. They would contain people with excellent minds and tools, but they would not be walled off, as scientific centers so often are, either from the lives of ordinary people or from the realities of political processes. The people in these centers would be at home with farmers, miners, planners, and heads of state and they would be able both listen to and talk to all of them.

# The Role of the Bioregional Learning Centers

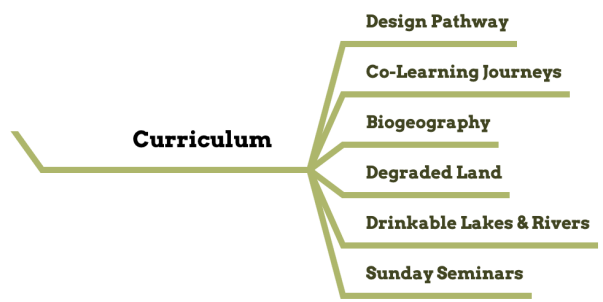
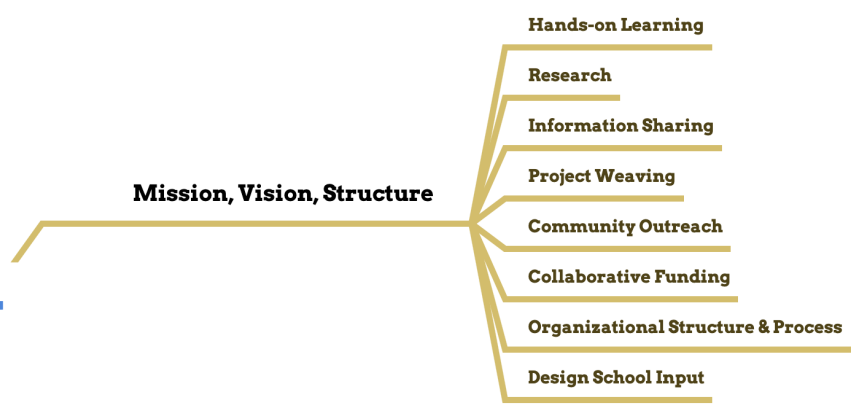
- The job of these centers is basically to enhance... the capacity to solve problems in ways that are consistent with the culture and the environment. The centers collect, make sense of, and disseminate information about the resources of their bioregions, and about the welfare of the people and of the ecosystems. They are partly data repositories, partly publishing and broadcasting and teaching centers, partly experiment stations and extension agents. They know about the latest technologies, and the traditional ones, and about which ones work best under what conditions. They are able, insofar as the state of knowledge permits, to see things whole, to look at long-term consequences, and to tell the truth. They are also able to perceive and admit freely where the boundaries of the state of knowledge are and what is not known.
- Above all, the job of these centers is to hold clear and true the context, the values, the ways of thinking, through which all development plans and resource management schemes proceed.

# A Brief Descriptive Statement

- The Genesee Finger Lakes Bioregional Design School and Learning Center is an ecological and educational design initiative intended to provide a coherent framework for learning, teaching, and understanding about our bioregion, including its problems, opportunities, and resources for change. It is part of a global network of bioregional centers, each dedicated to maximizing its ecosystem contributions to the regeneration of the Earth.
- This network is fostered by the Design School for Regenerating Earth co-founded by Joe Brewer in Barichara, Colombia. The diagrams on the next few slides show the principal elements of the Learning Center and suggest some of what will be required to make it a living reality.

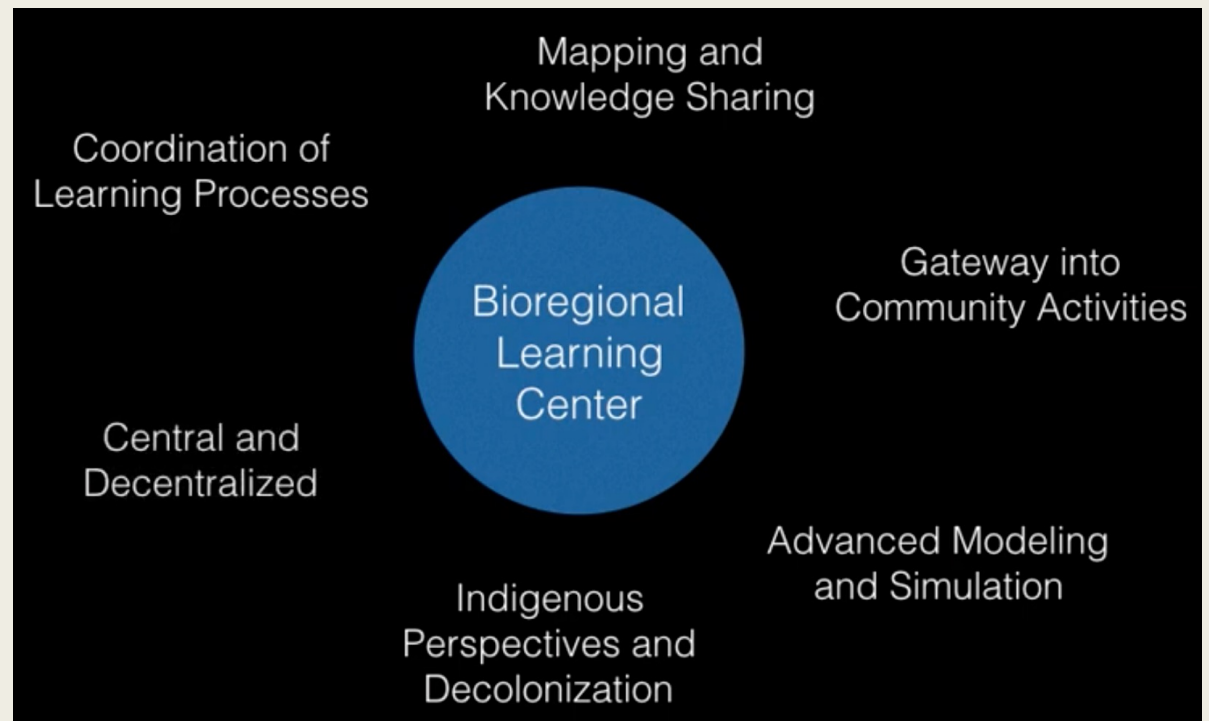


# Genesee Finger Lakes Bioregional Learning Center



## What is a Bioregional Learning Center?

- A community of co-learners
- A research organization
- A place for study & knowledge sharing
- A center for indigenous perspectives and decolonization



# Why Create One for the Genesee Finger Lakes Bioregion?

- Community Engagement
- Identifying Needs & Priorities
- Working with Global Thought Leaders
- An Idea Whose Time Has Come?
- Leading to a Bioregional Council



# Mission, Vision, Structure

- Hands-on Learning
- Research
- Information Sharing
- Project Weaving
- Community Outreach
- Collaborative Funding
- Organizational Structure & Process
- Design School Input



# Curriculum

- Design Pathway
- Co-Learning Journeys
- Biogeography
- Degraded Land
- The Water Cycle
- Scaffolding for Cultural Evolution
- Sunday Seminars

# Research & Inquiry & Other Functions

- Earth Systems Science
- Story of Place
- Project Weaving
- Cultural Foundation
- Other Functions
  - Nature Retreat
  - Youth Programs
  - Special Events

# Advisory Board and Public Supporters

- Local Groups
- Community Leaders
- Donors & Investors
  - *Development Proposals*
  - *Legal Structure*
  - *Budgets & Fundraising*

## Campus

- 183 Quaker Meeting House Rd
- Legal Structure (e.g., lease, land trust, etc.)
- Ecosystem Restoration
- Regenerative Design